

## About RegDesk 4.0

RegDesk is a desktop security tool for Windows 95, Windows 98 and Windows ME. With RegDesk administrators and parents can easily block access to specific areas of windows. RegDesk is the ideal tool for an environment where multiple users, like in universities and training centers, use a single machine.

Most of Windows '95/98 behaviors depend on the entries in Registry. You can prevent access to users from such vital areas like display properties, network Properties, printers' properties, Start button settings menu, Virtual memory settings, Shutdown and lot more. All this is possible without the need for you to learn the Windows cumbersome registry.

RegDesk 4.0 allows you hide selected Drive letters, Network Neighborhood icon, Control Panel option in Start menu and other options.

For technical support contact: [support@easytools.com](mailto:support@easytools.com)

## System Requirements:

### Recommended Hardware:

- Pentium®-class processor with at least 64MB of RAM

### RegDesk 4.0 runs under:

- Windows'95, Windows '98 and Windows ME

However, few features work in windows 2000 and windows XP as well, but it stands untested. When you run RegDesk in either of these operating systems, you get a startup dialog box as shown in the figure below. Click the suitable button to proceed.



Figure 1: Message box

## Features of RegDesk 4.0

- Ability to disable certain options in IE.
- Supports Windows ME.

- Provides more security options.
- Provides a familiar Microsoft management console like interface.
- Allows the save feature for saving the current security settings in a machine, and deploying in another machine
- Permits reporting feature to save the current security settings in a machine as HTML.

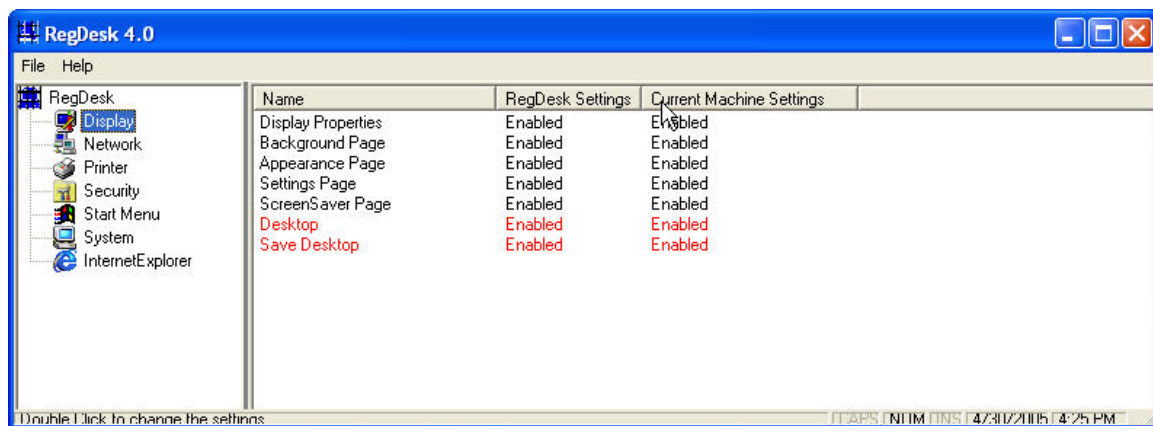
**Note:**

Using RegDesk 4.0 involves selection of the category you are interested and choosing the option you want to set. Since RegDesk achieves its functions by writing to Windows Registry, we strongly suggest backing up your registry before using RegDesk. This will help you get back, incase of any difficulties.

### Illustration for a RegDesk feature

#### How to change security settings in your machine

RegDesk comes with a familiar Microsoft Management Console like interface. The main categories for which you can change the settings are shown on the left hand pane. On selecting a particular category, the available security options are shown on the right hand pane as shown in the figure below.



**Figure 2: Security settings**

To Change option setting for a particular category:

1. Double click **Display Properties**.

**Note:**

To set the options under any of these categories you need to first select the category in the left pane and double click on the option of that category in the right pane.

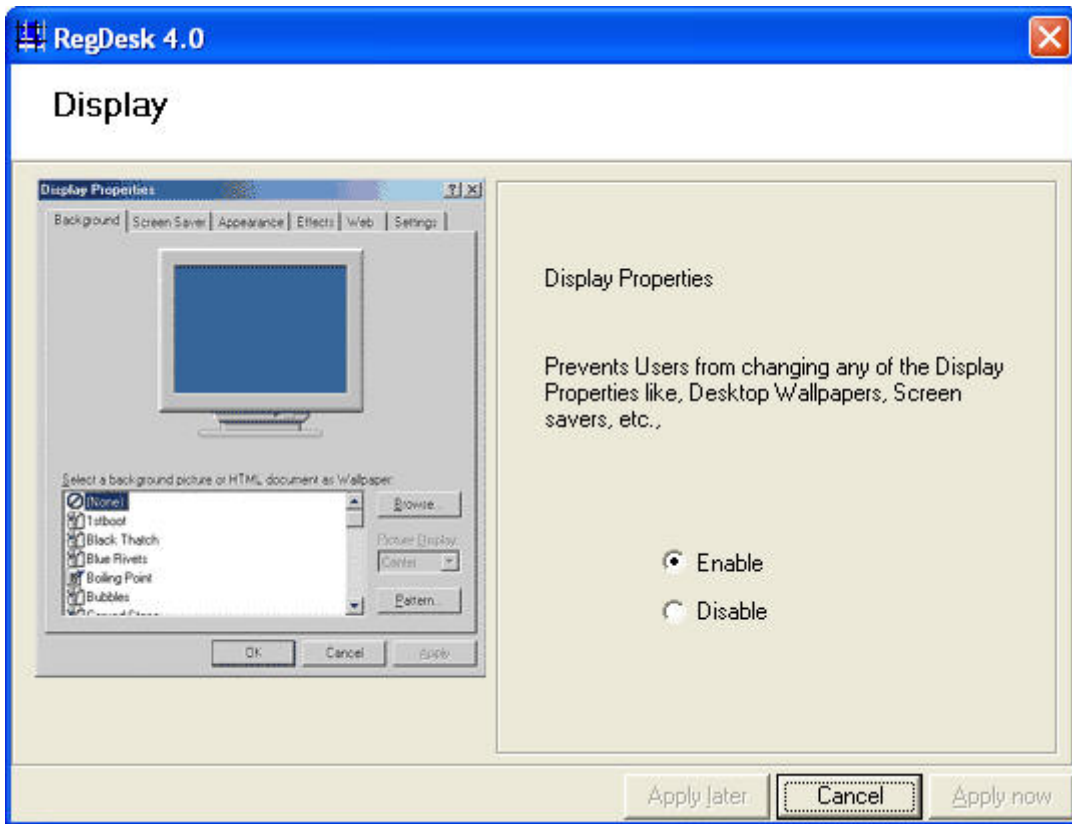


Figure 3: Display Properties screen

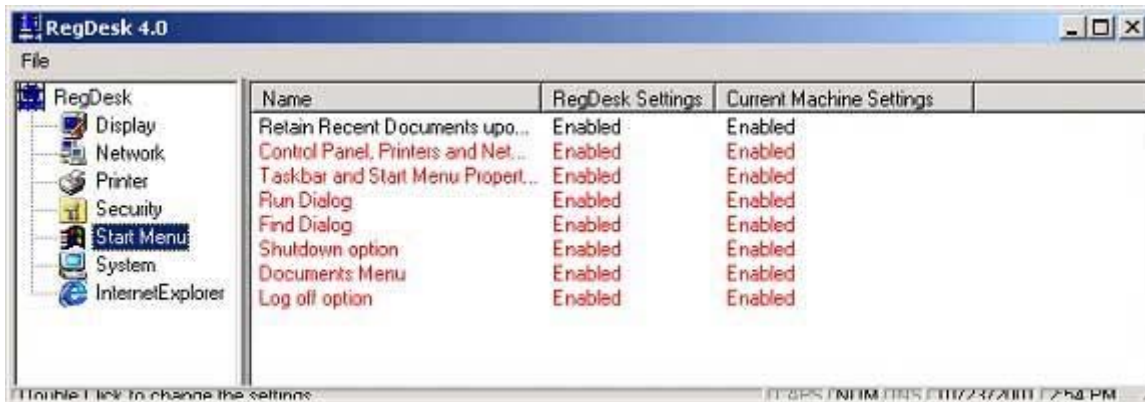
2. Select the corresponding radio button to specify the property.
3. After you change the settings, you have the option to apply the settings right away or apply them later on. If you choose to apply the settings later, on exiting RegDesk or on opening a new settings file, you are prompted to apply or discard the settings you have done.



4. You can choose to apply the settings, discard them or return back to RegDesk for further changes.

**Note:**

The options that are shown in red get applied only on restarting the machine. This is necessary as these settings are very close to the operating system. This is also indicated in the status bar.



**Figure 4: Settings screen**

5. When you make some security changes that require a restart, you are alerted with a restart confirmation box. You can choose to restart the system immediately or restart latter.



**Figure 5: Confirmation dialog box**

You can save the current security settings in a machine and deploy it in another machine by saving the file to an .rds file. This file can be opened in any other machine and the changes will be applied to that machine.

### Applying settings for the options

After you change the settings, you have the option to apply the settings right away or apply them latter on. If you choose to apply the settings latter, on exiting RegDesk or on opening a new settings file, you are prompted to apply or discard the settings you have done with a confirmation dialog box.

### Contact Details

EasyTools.com is always ready to answer any questions regarding EasyStruct 4.5 Enterprise SE and our other products. For technical support for any of our products, please email our support team at [support@easytools.com](mailto:support@easytools.com).

For all sales enquiries including academic pricing and volume licensing of the product contact us at [sales@easytools.com](mailto:sales@easytools.com).

You can try out our other products by visiting our website [www.easytools.com](http://www.easytools.com).  
For more details about us and on how to contact us, visit us at [www.vishwak.com](http://www.vishwak.com)

**VISHWAK SOLUTIONS, INC.,**  
4275, 148th AVE NE, APT F101,  
Bellevue, WA 98007  
Tel: (425) 8838924  
Fax: (425) 818 2181

**VISHWAK SOLUTIONS PVT.LTD.**  
New No 169, Habibullah Road,  
T.Nagar, Chennai - 600 017.  
India  
Telephone: +91 44 5222 2345  
Fax: +91 44 5204 7711

## Acknowledgements

Many people have helped in making RegDesk what it is now. Various people have helped us during different phases of the product development and testing, especially during the revision build from version 2.0 to 4.0. We are always guided by your valuable feedback, criticisms, suggestions and encouragement. We express our thanks to Will Tracz ([wtracz@yahoo.co.uk](mailto:wtracz@yahoo.co.uk)), for permitting us to use RSADLL component in this product.

## Licensing Agreement

RegDesk is a shareware. This means:

1. All copyrights to RegDesk are exclusively owned by Vishwak Solutions, Inc.,
2. Anyone may use this software for a test period of 30 days. Following this test period of 30 days or less, if you wish to continue to use RegDesk, you **MUST** register. If not registered after the trial period, it should be uninstalled. Unregistered use of RegDesk after the evaluation period is in violation of international copyright laws.
3. There are 2 basic types of licenses issued for RegDesk , these are:
  - a. A single user license.  
One registered copy of RegDesk may either be used by a single person on new or more computers, or installed on a single workstation used by any number of people, but not both. You may access the registered version of RegDesk through a network, provided that you have obtained individual licenses covering all workstations that will access through the network. For instance, if 5 different workstations access RegDesk on the network, each workstation must have its own license, regardless of whether they use RegDesk at different times or concurrently.

- b. A Multiple user license.  
A number of user licenses can be purchased for use by the same number of users of the purchaser or the purchaser's employees or accredited agents of the purchaser's. For details, visit our website at [www.easytools.com](http://www.easytools.com). For other requirements including academic pricing and volume pricing, contact us at [sales@easytools.com](mailto:sales@easytools.com).
  4. Once registered, the user is granted a non-exclusive license to use RegDesk on as many computers as defined by the licensing terms above according to the number of licenses purchased, for any legal purpose. The registered RegDesk software may not be rented or leased, but may be permanently transferred, in its entirety, if the person receiving it agrees to the terms of this license. If the software is an update, the transfer must include the update and all previous versions.
  5. Registered Versions of RegDesk will display "Registered to: " in the About box (accessed by selecting Help Menu).
  6. The RegDesk unregistered shareware version, may be freely distributed, provided the distribution package is not modified. No person or company may charge a fee for the distribution of RegDesk without written permission from Vishwak Solutions, Inc.,
  7. There are NO additional license fees, apart from the cost of registration, associated with the creation and distribution of RegDesk reports. Legally registered owners may use their copies of RegDesk to produce reports and to distribute those reports free of any additional royalties.
  8. You may not use, copy, emulate, clone, rent, lease, sell, modify, decompile, disassemble, otherwise reverse engineer, or transfer the licensed program, or any subset of the licensed program, except as provided for in this agreement. Any such unauthorized use shall result in immediate and automatic termination of this license and may result in criminal and/or civil prosecution.
  9. Installing and using RegDesk signifies acceptance of these terms and conditions of the license.
  10. If you do not agree with the terms of this license you must remove RegDesk files from your storage devices and cease to use the product.
- Copyright 1997-2002, Vishwak Solutions, Inc., Bellevue, WA. All rights reserved. Other Products and company names mentioned may be trademarks of their respective owners.

### **Warranty**

THIS SOFTWARE IS PROVIDED ON AN "AS IS" WITHOUT WARRANTY OF ANY KIND. TO THE MAXIMUM EXTENT PERMITTED BY APPLICABLE LAW, VISHWAK SOLUTIONS, INC., AND ITS SUPPLIERS DISCLAIM ALL WARRANTIES, EITHER EXPRESSED OR IMPLIED, INCLUDING, BUT NOT

LIMITED TO, IMPLIED WARRANTIES OF MERCHANTABILITY AND FITNESS FOR A PARTICULAR PURPOSE AND ANY WARRANTY AGAINST INFRINGEMENT, WITH REGARD TO THE SOFTWARE PRODUCT. VISHWAK SOLUTIONS, INC. WILL NOT BE LIABLE FOR ANY SPECIAL, INCIDENTAL, CONSEQUENTIAL, INDIRECT OR SIMILAR DAMAGES DUE TO LOSS OF DATA OR ANY OTHER REASON, EVEN IF VISHWAK SOLUTIONS, INC. OR AN AGENT OF VISHWAK SOLUTIONS, INC. HAS BEEN ADVISED OF THE POSSIBILITY OF SUCH DAMAGES. IN NO EVENT SHALL VISHWAK SOLUTIONS, INC. LIABILITY FOR ANY DAMAGES EVER EXCEED THE PRICE PAID FOR THE LICENSE TO USE THE SOFTWARE, REGARDLESS OF THE FORM OF THE CLAIM.

### **Distribution**

You may freely distribute the Evaluation Version of RegDesk, provided you don't charge in any manner for such distributions. We would like a copy of the distribution CD/magazine, when it is ready for shipment. Please send to: Vishwak Solutions, Inc., 4275, 148th AVE NE, APT F101, Bellevue, WA 98007. This is not an obligation but we like to keep records of such distributions. You may also review or publish your comments about RegDesk in Magazines/Internet Pages/Newsgroups/Emails/Books. Any such reviews should carry a clear disclaimer stating that the views expressed are of the author(s) of the review and not that of Vishwak Solutions, Inc., RegDesk is NOT in the public domain - the publisher Vishwak Solutions, Inc., retains ownership and copyright, and exclusively reserves all rights to the software. Modification of the program or its resources without the publisher's explicit written permission is strictly forbidden.

**RegDesk IS A PROPERTY OF VISHWAK SOLUTIONS, INC., BELLEVUE, WA.**